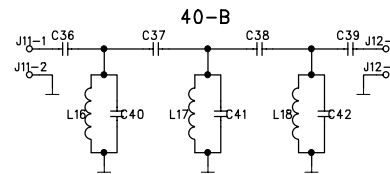
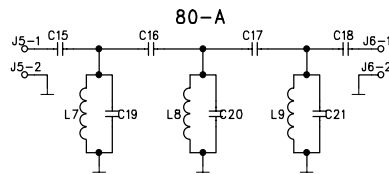
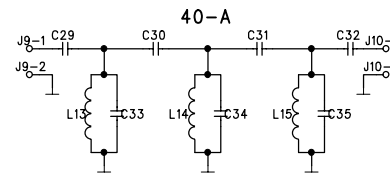
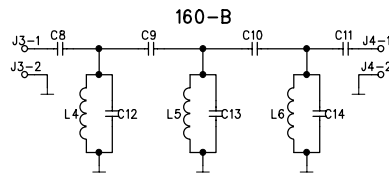
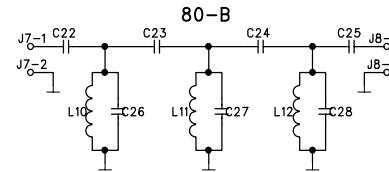
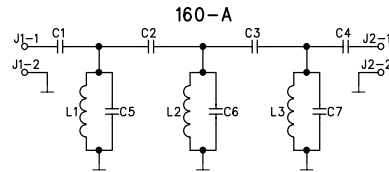


Ltr	Qty	Change	Reason / ECO no	Design	Date Review	Date Appr



160m

80m

40m

C1, C8	560p	C15, C22	270p	C29, C36	120p
C2, C9	82p	C16, C23	47p	C30, C37	22p
C3, C10	82p	C17, C24	47p	C31, C38	22p
C4, C11	560p	C18, C25	270p	C32, C39	120p
C5, C12	680p	C19, C26	330p	C33, C40	150p
C6, C13	1000p	C20, C27	560p	C34, C41	270p
C7, C14	680p	C21, C28	330p	C35, C42	150p

L1, L4	5.5u	L7, L10	2.9u	L13, L16	1.63u
L2, L5	6.3u	L8, L11	2.9u	L14, L17	1.5u
L3, L6	5.5u	L9, L12	2.9u	L15, L18	1.63u

- 6.3u 33 kierrosta T50-2 rungolle
- 5.5u 31 kierrosta T50-2 rungolle
- 2.9u 23 kierrosta T50-2 rungolle
- 1.63u 20 kierrosta T50-6 rungolle
- 1.5u 19 kierrosta T50-6 rungolle

Drawn	Arch id	Serial no	Sheet	Cooperator's doc no
Review	BANDPASS-FILTTERIT 160M - 40M			Dwg no
Appr	RX-KÄYTTÖÖN.			
Design	Scale	1:1		Rev
Replaces	CIRCUIT DIAGRAM			
Replaced by				